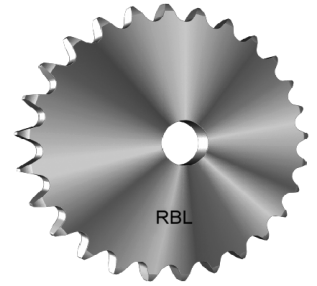


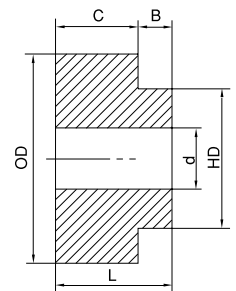
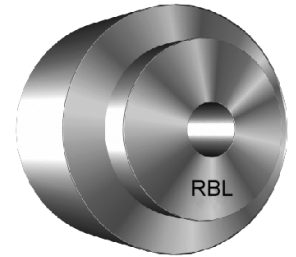
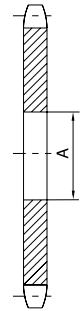
WELD-ON SPROCKETS

Weld-On Finished Sprocket Plates

No. o Teeth	35	40	50	60	80	100
	3/8" Pitch	1/2" Pitch	5/8" Pitch	3/4" Pitch	1" Pitch	1-1/4" Pitch
9				60V9	80W9	
10			50V10	60V10	80W10	100X10
11			50V11	60V11	80W11	100X11
12		40V12	50W12	60W12	80X12	100X12
13		40V13	50W13	60W13	80X13	100X13
14		40V14	50W14	60W14	80X14	100Y14
15	35V15	40V15	50W15	60W15	80X15	100Y15
16	35V16	40W16	50W16	60X16	80X16	100Y16
17	35V17	40W17	50X17	60X17	80X17	100Y17
18	35V18	40W18	50X18	60X18	80X18	100Y18
19	35V19	40W19	50X19	60X19	80X19	100Y19
20	35V20	40X20	50X20	60X20	80X20	100Y20
21	35V21	40X21	50X21	60X21	80X21	100Y21
22	35W22	40X22	50X22	60X22	80X22	100Y22
23	35W23	40X23	50X23	60X23	80X23	100Y23
24	35W24	40X24	50X24	60X24	80X24	100Y24
25	35W25	40X25	50X25	60X25	80X25	100Y25
26	35W26	40X26	50X26	60X26	80X26	100Y26
27	35W27	40X27	50X27	60X27	80X27	
28	35W28	40X28	50X28	60X28	80X28	100Y28
29	35W29	40X29	50X29	60X29	80X29	
30	35W30	40X30	50X30	60X30	80X30	100Y30
31	35W31	40X31	50X31	60X31		
32	35W32	40X32	50X32	60X32	80X32	100Y32
33	35W33	40X33	50X33	60X33	80X33	
34	35W34	40X34	50X34	60X34	80X34	
35	35W35	40X35	50X35	60X35	80X35	100Y35
36	35W36	40X36	50X36	60X36	80X36	100Y36
37	35W37	40X37	50X37	60X37		
38	35W38	40X38	50X38	60X38		
39	35W39	40X39	50X39	60X39		
40	35W40	40X40	50X40	60X40	80X40	
42	35W42	40X42	50X42	60X42		
43	35W43	40X43	50X43	60X43		
44	35W44	40X44	50X44	60X44		
45	35W45	40X45	50X45	60X45	80X45	
48	35W48	40X48	50X48	60X48	80X48	
50	35W50	40X50	50X50	60X50		
54	35W54	40X54	50X54	60X54	80X54	
60	35W60	40X60	50X60	60X60	80X60	
70	35W70	40X70	50X70	60X70		
72	35W72	40X72	50X72	60X72		
80	35W80	40X80	50X80	60X80		
84	35W84	40X84	50X84	60X84		
90		40X90				
96	35W96		50X96	60X96		



All black oxide finish.



Also available in hardened teeth.

For OD, PD, and L dimensions, please refer to the A Plate dimensions on corresponding sprocket pages. (eg. 50X25 OD= the OD dimension for the H50A25)

Hub No.	Chain No.	d		OD	HD	L	B	C	App. Wt. (Lbs.)
		Min.	Max.						
V	35-60	0.500	0.875	1.438	1.125	1.188	0.438	0.750	0.32
W	35-80	0.500	1.250	1.813	1.625	1.438	0.438	1.000	0.64
X	40-100	0.500	1.500	2.500	2.000	1.438	0.438	1.000	1.42
XX	40-100	1.000	1.625	3.000	2.000	1.500	0.438	1.063	2.20
Y	100	1.000	2.000	3.750	2.750	1.875	0.688	1.188	3.92

Hub No.	A
V	1-1/8
W	1-5/8
X	2
XX	2
Y	2-3/4